

POWERHOUSE™ TIMING PULLEYS

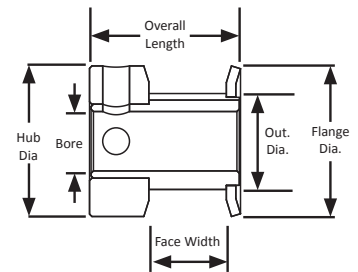
(For use with GT®2, GT®3, and FHT®-3 belts)

3 mm Pitch
For 15 mm Wide Belts
Hub
Aluminum
Clear Anodized
Finished Bore

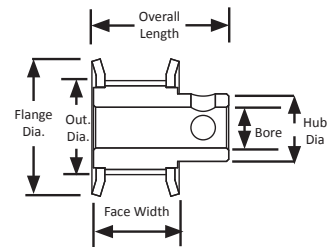


Part Number	No. of Teeth	Type	Pitch Dia. (in)	Out. Dia. (in)	Flange Dia. (in)	Bore (in)	Face Width (in)	Overall Length (in)	Hub Dia. (in)	Set Screw
16-3P15-6CA2	16	6C	0.602	0.572	0.710	0.188	0.689	0.927	0.710	2 x 6-40 @ 90°
16-3P15-6CA3	16	6C	0.602	0.572	0.710	0.250	0.689	0.927	0.710	2 x 6-40 @ 90°
17-3P15-6CA2	17	6C	0.639	0.609	0.740	0.188	0.689	0.927	0.710	2 x 6-40 @ 90°
18-3P15-6FA2	18	6F	0.677	0.647	0.790	0.188	0.742	1.057	0.442	2 x 4-40 @ 90°
18-3P15-6FA3	18	6F	0.677	0.647	0.790	0.250	0.742	1.057	0.442	2 x 8-32 @ 90°
19-3P15-6FA2	19	6F	0.714	0.684	0.815	0.188	0.742	1.057	0.468	2 x 4-40 @ 90°
19-3P15-6FA3	19	6F	0.714	0.684	0.815	0.250	0.742	1.057	0.468	2 x 8-32 @ 90°
20-3P15-6FA2	20	6F	0.752	0.722	0.895	0.188	0.742	1.057	0.500	2 x 4-40 @ 90°
20-3P15-6FA3	20	6F	0.752	0.722	0.895	0.250	0.742	1.057	0.500	2 x 8-32 @ 90°
21-3P15-6FA2	21	6F	0.790	0.760	0.895	0.188	0.742	1.057	0.500	2 x 4-40 @ 90°
21-3P15-6FA3	21	6F	0.790	0.760	0.895	0.250	0.742	1.057	0.500	2 x 8-32 @ 90°
22-3P15-6FA2	22	6F	0.827	0.797	0.945	0.188	0.742	1.057	0.562	2 x 4-40 @ 90°
22-3P15-6FA3	22	6F	0.827	0.797	0.945	0.250	0.742	1.057	0.562	2 x 8-32 @ 90°
24-3P15-6FA3	24	6F	0.902	0.872	1.025	0.250	0.742	1.057	0.625	2 x 8-32 @ 90°
25-3P15-6FA3	25	6F	0.940	0.910	1.060	0.250	0.742	1.057	0.625	2 x 8-32 @ 90°
26-3P15-6FA3	26	6F	0.977	0.947	1.105	0.250	0.742	1.057	0.625	2 x 8-32 @ 90°
28-3P15-6FA3	28	6F	1.053	1.023	1.173	0.250	0.742	1.057	0.701	2 x 8-32 @ 90°
28-3P15-6FA5	28	6F	1.053	1.023	1.173	0.375	0.742	1.057	0.701	2 x 8-32 @ 90°
30-3P15-6FA3	30	6F	1.128	1.098	1.250	0.250	0.742	1.057	0.776	2 x 8-32 @ 90°
32-3P15-6FA3	32	6F	1.203	1.173	1.323	0.250	0.742	1.057	0.851	2 x 8-32 @ 90°
34-3P15-6FA3	34	6F	1.278	1.248	1.398	0.250	0.742	1.069	0.921	2 x 8-32 @ 90°
36-3P15-6FA3	36	6F	1.353	1.323	1.473	0.250	0.742	1.069	1.000	2 x 8-32 @ 90°
38-3P15-6FA3	38	6F	1.429	1.399	1.549	0.250	0.742	1.069	1.075	2 x 8-32 @ 90°
40-3P15-6FA3	40	6F	1.504	1.474	1.625	0.250	0.742	1.069	1.150	2 x 8-32 @ 90°
44-3P15-6FA3	44	6F	1.654	1.624	1.775	0.250	0.742	1.069	1.300	2 x 8-32 @ 90°
45-3P15-6FA3	45	6F	1.692	1.662	1.775	0.250	0.742	1.069	1.250	2 x 8-32 @ 90°
48-3P15-6A4	48	6	1.805	1.775	-	0.313	0.736	1.111	1.250	2 x 8-32 @ 90°
50-3P15-6A4	50	6	1.88	1.85	-	0.313	0.736	1.111	1.250	2 x 8-32 @ 90°
56-3P15-6A4	56	6	2.105	2.075	-	0.313	0.736	1.111	1.250	2 x 8-32 @ 90°
60-3P15-6A4	60	6	2.256	2.226	-	0.313	0.736	1.111	1.250	2 x 8-32 @ 90°
62-3P15-6A4	62	6	2.331	2.301	-	0.313	0.736	1.111	1.250	2 x 8-32 @ 90°
68-3P15-6A4	68	6	2.557	2.527	-	0.313	0.736	1.111	1.250	2 x 8-32 @ 90°
72-3P15-6A4	72	6	2.707	2.677	-	0.313	0.736	1.111	1.250	2 x 8-32 @ 90°
74-3P15-6A4	74	6	2.782	2.752	-	0.313	0.736	1.111	1.250	2 x 8-32 @ 90°
80-3P15-6A4	80	6	3.008	2.978	-	0.313	0.736	1.111	1.250	2 x 8-32 @ 90°
90-3P15-6A4	90	6	3.384	3.354	-	0.313	0.736	1.111	1.250	2 x 8-32 @ 90°
100-3P15-6A4	100	6	3.76	3.73	-	0.313	0.736	1.111	1.250	2 x 8-32 @ 90°
120-3P15-6A4	120	6	4.511	4.481	-	0.313	0.736	1.111	1.250	2 x 8-32 @ 90°

TYPE 6C



TYPE 6F



TYPE 6

